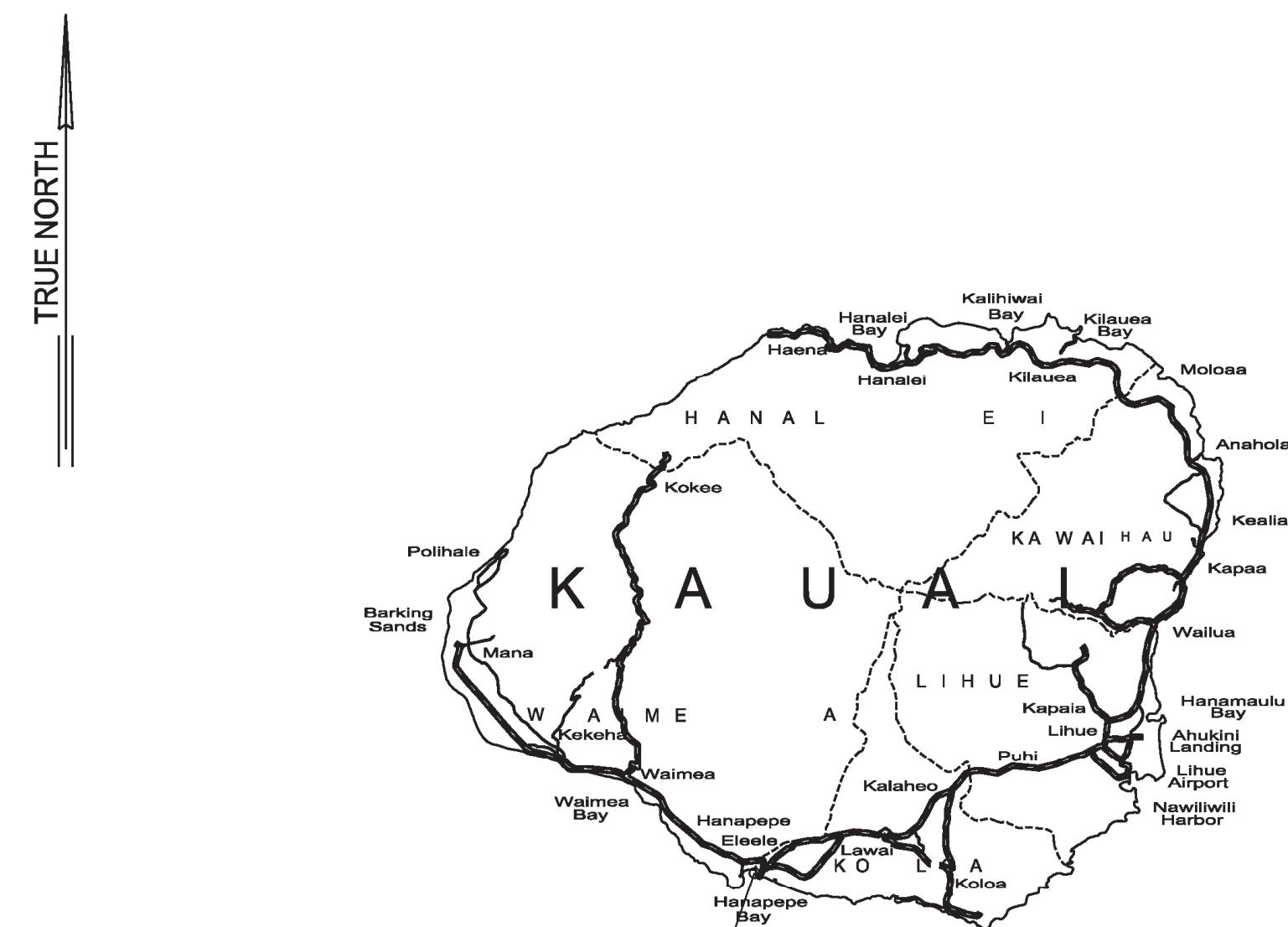


ASBESTOS CONTAINING DUST CLEANUP AND LIMITED VISUAL ASSESSMENT, PORT ALLEN HARBOR

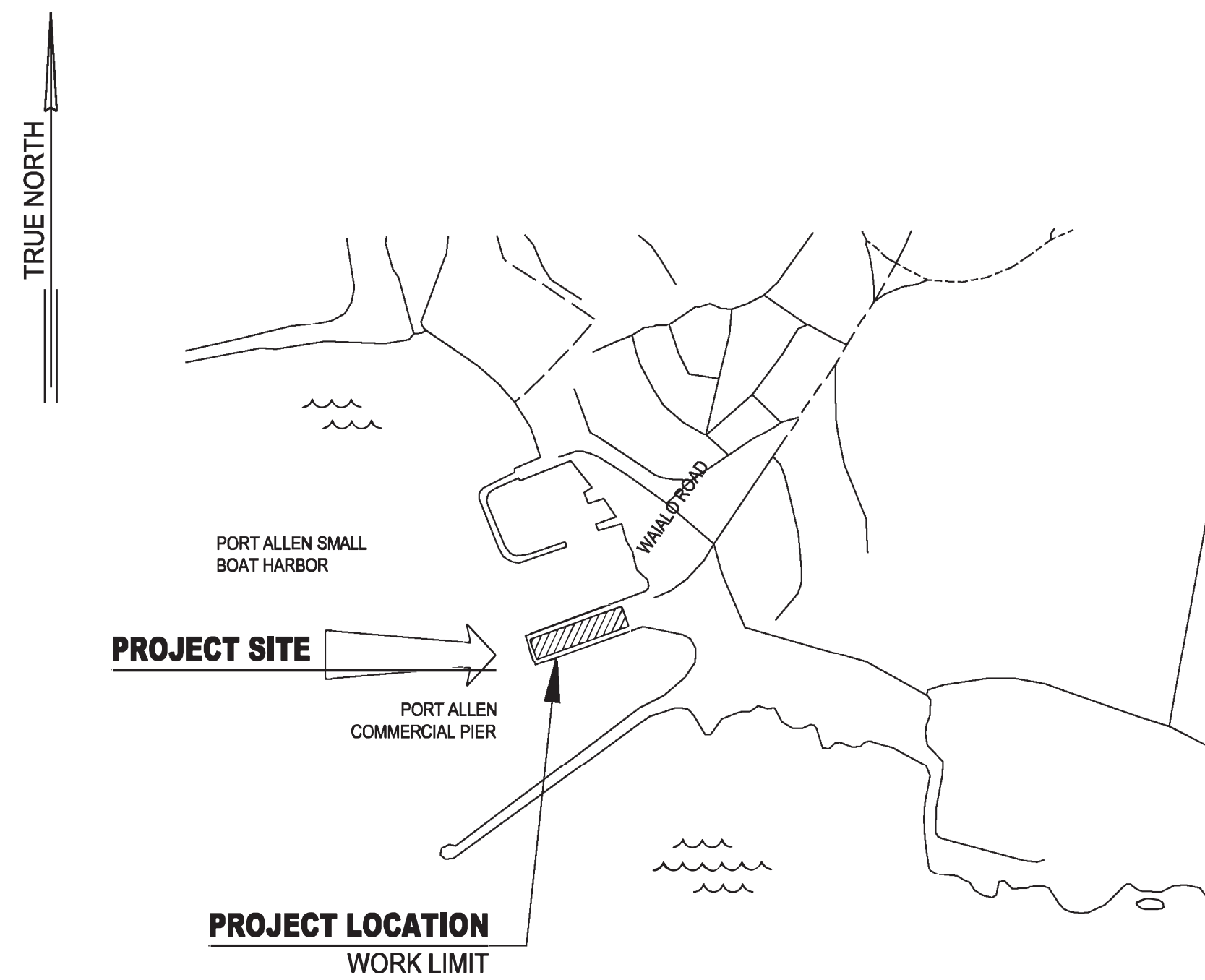
STATE OF HAWAII
DEPARTMENT OF TRANSPORTATION
HARBORS DIVISION

S70150



PROJECT LOCATION
PORT ALLEN HARBOR, KOLOA, KAUAI

LOCATION MAP
NOT TO SCALE



PROJECT LOCATION
WORK LIMIT

VICINITY MAP
NOT TO SCALE

DEPARTMENT OF TRANSPORTATION
STATE OF HAWAII

APPROVED BY:

for DIRECTOR OF TRANSPORTATION

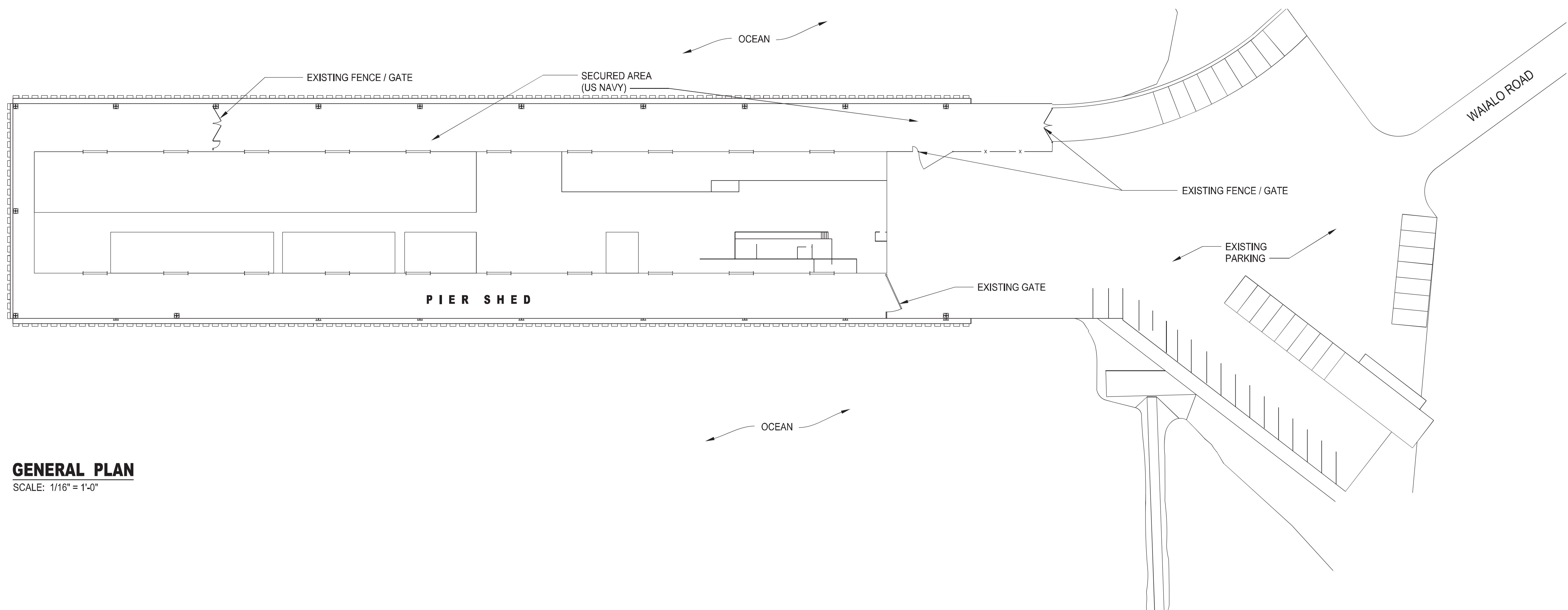
Mar 6, 2023

DATE

SHEET

1

1 OF 5 SHEETS



GENERAL PLAN

SCALE: 1/16" = 1'-0"

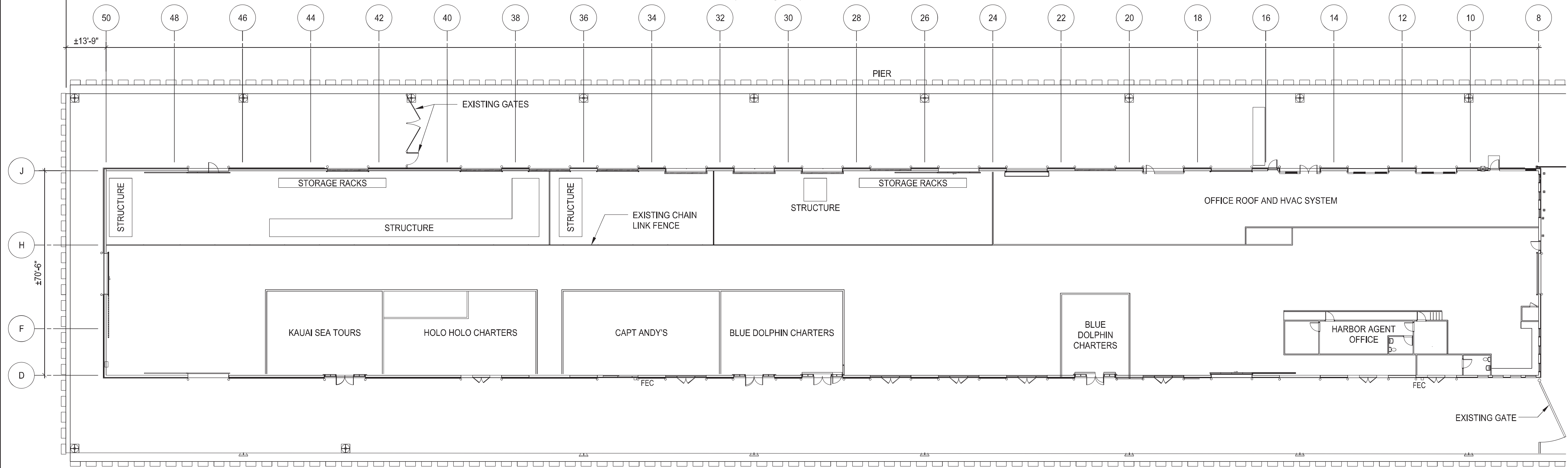
GENERAL NOTES

1. CONTRACTOR SHALL VERIFY CONDITONS AND DIMENSIONS IN THE FIELD PRIOR TO ORDERING MATERIALS.
2. CONTRACTOR SHALL EXERCISE CAUTION TO PREVENT DAMAGE TO EXISTING STRUCTURES, UTILITIES AND EQUIPMENT IN THE PROJECT AREA.
3. ALL WORK SHALL BE COORDINATED WITH THE HARBORS DIVISION KAUAI DISTRICT MANAGER, PORT ALLEN HARBOR AGENT, AND PROJECT ENGINEER.
4. ALL STRUCTURES AND PORTIONS OF STRUCTURES SHOWN ON THE PLAN ARE EXISTING UNLESS SPECIFICALLY NOTED. EXISTING CONDITIONS ARE BASED ON THE BEST AVAILABLE INFORMATION. NO GUARANTEE IS GIVEN THAT THEY ARE MORE THAN APPROXIMATELY CORRECT.
5. THE CONTRACTOR WILL NOT BE ALLOWED TO WORK WHEN A FUEL BARGE IS BERTHED AT THE PORT ALLEN SHED FACILITY. THE EXACT SCHEDULING OF THE WORK AND RESTIRCTIONS ON THE CONTRACTOR'S ACTIVITIES WILL BE ESTABLISHED AT THE PRE-CONSTRUCTION MEETING.
6. THE CONTRACTOR SHALL COMPLY WITH THE CLEAN WATER ACT AND THE STATE HARBORS DIVISION STORMWATER MANGEMENT PROGRAM. NO POLLUTANT IS ALLOWED TO BE DISCHARGED DIRECTLY OR INDIRECTLY THROUGH THE HARBORS SMALL MS4 OR OTHER POTENTIAL PATHWAYS INTO HARBORS WATERS.
7. THE CONTRACTOR SHALL SUBMIT A SITE-SPECIFIC BEST MANAGEMENT PRACTICES (BMP) PLAN AND HEALTH & SAFETY PLAN TO HARBORS DIVISION PROJECT ENGINEER PRIOR TO THE START OF ANY WORK.
8. IN CASE OF RELEASE OF HAZARDOUS SUBSTANCE OR OIL, THE CONTRACTOR SHALL NOTIFY THE APPROPRIATE FACILITY PERSONNEL, EMERGENCY RESPONSE AGENCIES FOLLOWING NOTIFICATION PROCEDURES, AND SHALL NOTIFY THE HARBORS DIVISION ENVIRONMENTAL HOTLINE (808-587-1962) AND PROJECT ENGINEER IMMEDIATELY (I.E., WITHIN 24 HOURS). CONTACT INFORMATION MUST BE IN LOCATIONS THAT ARE READILY ACCESSIBLE AND AVAILABLE.
9. THE CONTRACTOR SHALL NOTE THAT THE EXISTING STEEL FRAME MEMBER IS SUSPECTED TO HAVE POTENTIAL ASBESTOS-CONTAINING DUST. ALL CLEANUP WORK SHALL BE PERFORMED IN STRICT ACCORDANCE WITH APPLICABLE EPA, OSHA AND DOH RULES AND REGULATIONS.

REV	DATE	DESCRIPTION	BY	APPROVED
STATE OF HAWAII DEPARTMENT OF TRANSPORTATION HARBORS DIVISION				
JOB TITLE ASBESTOS CONTAINING DUST CLEANUP AND LIMITED VISUAL ASSESSMENT, PORT ALLEN HARBOR KAUAI, HAWAII				
SHEET TITLE GENERAL PLAN AND GENERAL NOTES				
DESIGNED BY: LY				SHETS
DRAWN BY: EL				2
CHECKED BY: YZ	JOB NUMBER			
DATE: FEB 2023	S70150			
SCALE: AS SHOWN				2 OF 5 SHTS.

CONTRACTOR SHALL PROPERLY CLEAN POTENTIAL ASBESTOS-CONTAINING DUST ACCUMULATED ON ALL SPECIFIED AND READILY ACCESSIBLE INTERIOR SURFACES (I.E. HORIZONTAL SURFACES AND VERTICAL SURFACES) UP TO THIRTY (30) FEET IN HEIGHT. SEE SPECIFICATIONS FOR ADDITIONAL INFORMATION.

±493'-6"(21 BAYS @23'-6")



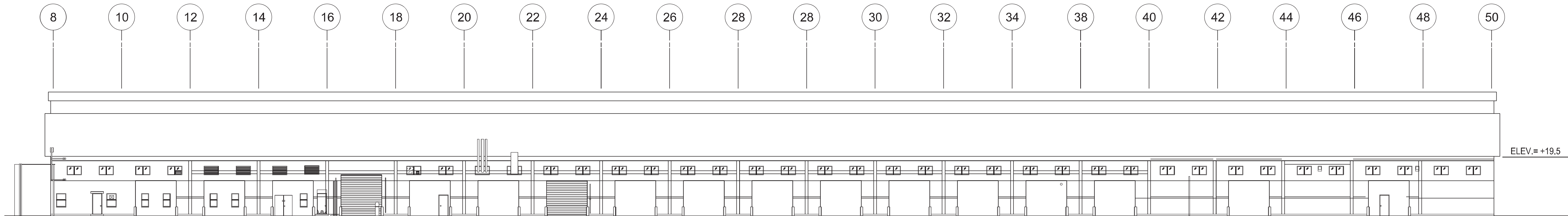
OVERALL FLOOR PLAN

SCALE: 1/16" = 1'-0"

NOTES

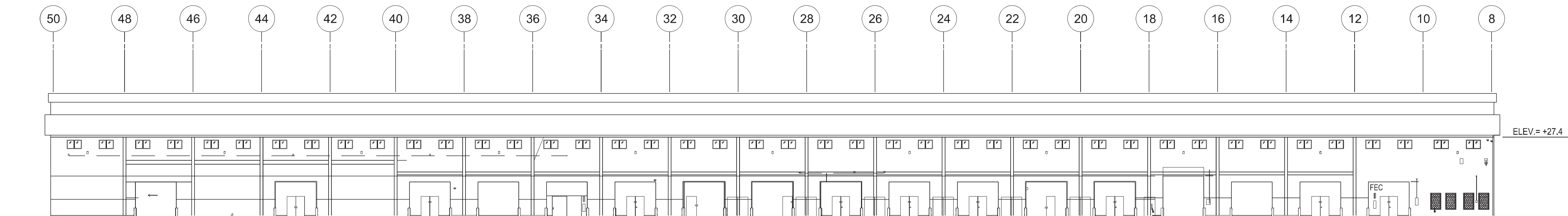
1. HORIZONTAL SURFACES – GIRTS, WINDOWSILLS AND FRAMES, DOOR HEADS/JAMBS/GUIDES, BEAMS, PURLINS, DIAGONAL BRACES, STRUCTURE ROOFS, OFFICE ROOFS, HVAC SYSTEM, EXISTING UTILITIES ATTACHED TO STEEL BEAMS AND GIRTS (I.E., FIRE, ELECTRICAL, ETC.) AND STORAGE RACKS.
2. VERTICAL SURFACES – STEEL COLUMNS, WINDOW FRAMES, DOOR JAMBS/GUIDES, BEAMS, PURLINS, AND DIAGONAL BRACES.

REV	DATE	DESCRIPTION	BY	APPROVED
STATE OF HAWAII DEPARTMENT OF TRANSPORTATION HARBORS DIVISION				
JOB TITLE ASBESTOS CONTAINING DUST CLEANUP AND LIMITED VISUAL ASSESSMENT, PORT ALLEN HARBOR KAUAI, HAWAII				
SHEET TITLE OVERALL FLOOR PLAN AND NOTES				
DESIGNED BY: LY				3
DRAWN BY: EL				
CHECKED BY: YZ				
DATE: FEB 2023	JOB NUMBER			
SCALE: AS SHOWN	S70150			3 OF 5 SHTS.



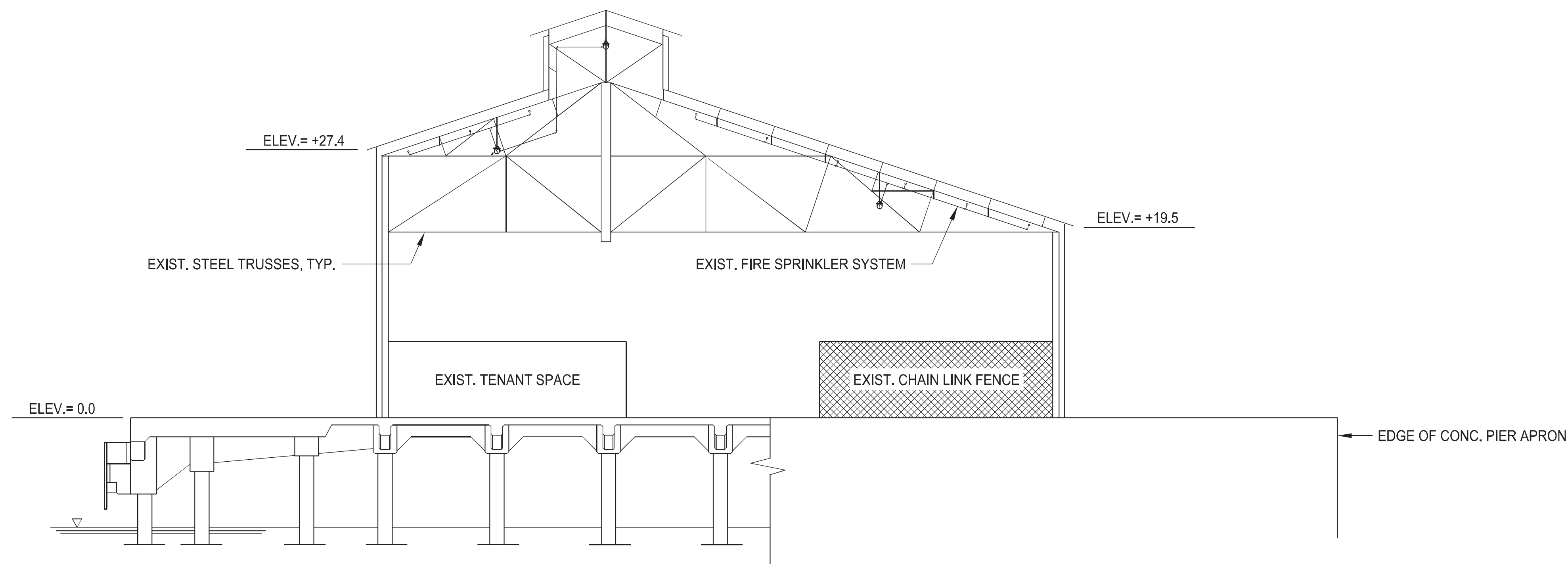
NORTH ELEVATION (NAVY)

SCALE: 1/16" = 1'-0"



SOUTH ELEVATION (TENANT)

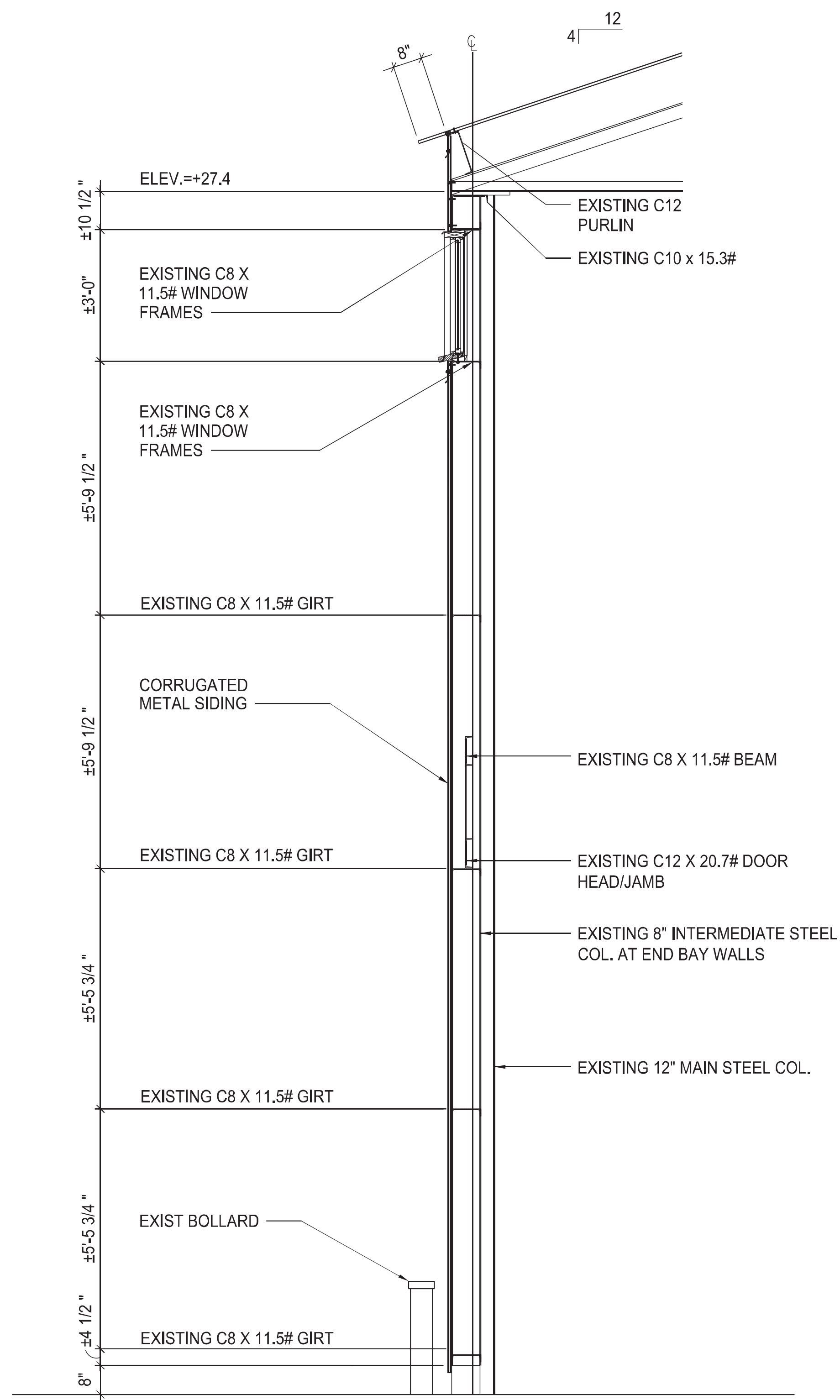
SCALE: 1/16" = 1'-0"



TYPICAL SHED SECTION THRU PORT ALLEN SHED

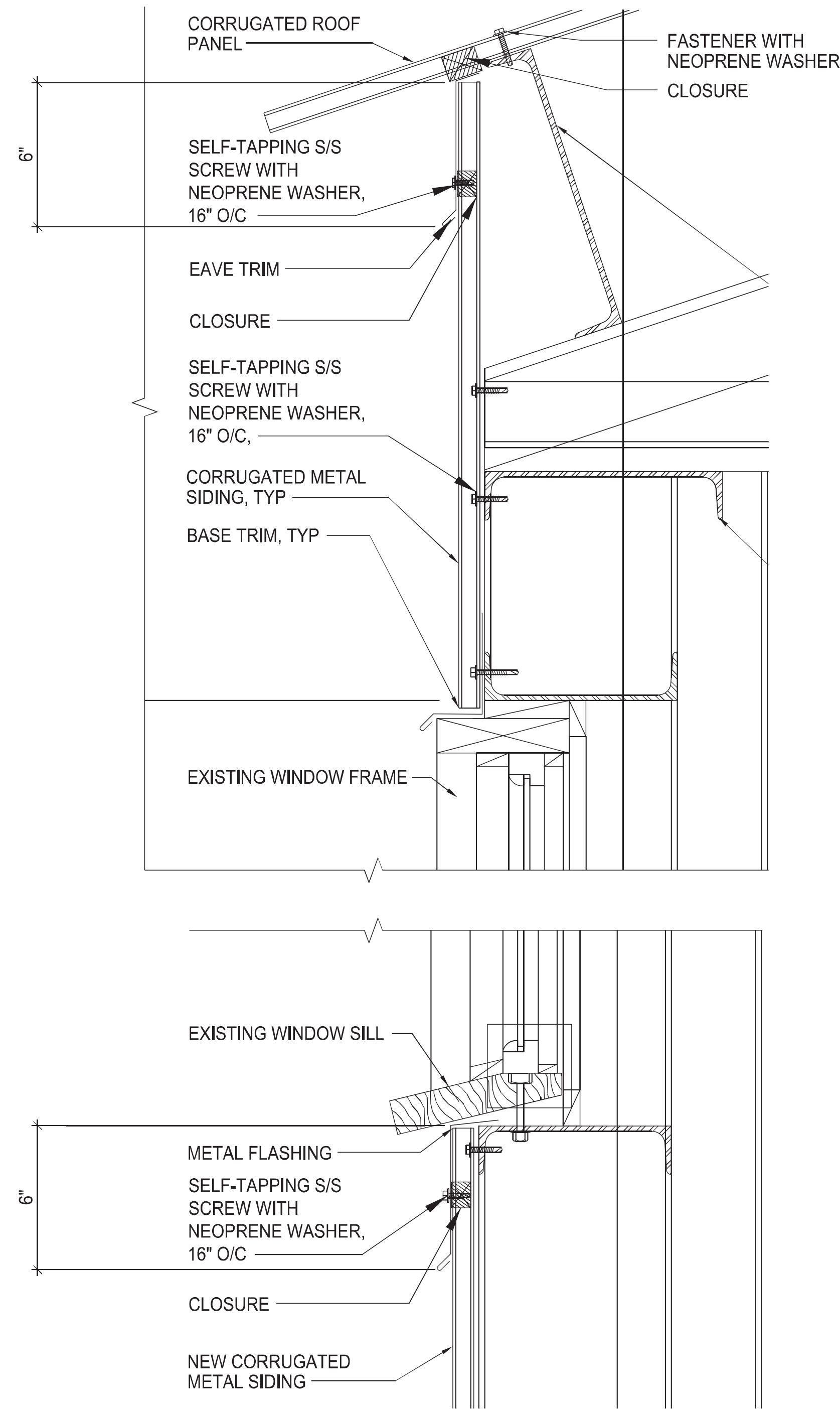
NOT TO SCALE

REV	DATE	DESCRIPTION	BY	APPROVED
STATE OF HAWAII DEPARTMENT OF TRANSPORTATION HARBORS DIVISION				
JOB TITLE ASBESTOS CONTAINING DUST CLEANUP AND LIMITED VISUAL ASSESSMENT, PORT ALLEN HARBOR KAUAI, HAWAII				
SHEET TITLE EXTERIOR ELEVATIONS AND SECTION				
DESIGNED BY: LY				SHEET
DRAWN BY: EL				4
CHECKED BY: YZ	JOB NUMBER			
DATE: FEB 2023	S70150			
SCALE: AS SHOWN				4 OF 5 SHTS.



NORTH WALL SECTION

SCALE: 1/2" = 1'-0"



SOUTH WALL SECTION

SCALE: 1/2" = 1'-0"

NOTES

CONTRACTOR SHALL PROPERLY CLEAN POTENTIAL ASBESTOS-CONTAINING DUST ACCUMULATED ON ALL SPECIFIED AND READILY ACCESSIBLE INTERIOR SURFACES (I.E. HORIZONTAL SURFACES AND VERTICAL SURFACES) UP TO THIRTY (30) FEET IN HEIGHT. SEE SPECIFICATIONS FOR ADDITIONAL INFORMATION

1. HORIZONTAL SURFACES – GIRTS, WINDOWSILLS AND FRAMES, DOOR HEADS/JAMBS/GUIDES, BEAMS, PURLINS, DIAGONAL BRACES, STRUCTURE ROOFS, OFFICE ROOFS, HVAC SYSTEM, EXISTING UTILITIES ATTACHED TO STEEL BEAMS AND GIRTS (I.E., FIRE, ELECTRICAL, ETC.) AND STORAGE RACKS.
2. VERTICAL SURFACES – STEEL COLUMNS, WINDOW FRAMES, DOOR JAMBS/GUIDES, BEAMS, PURLINS, AND DIAGONAL BRACES.

REV	DATE	DESCRIPTION	BY	APPROVED
STATE OF HAWAII DEPARTMENT OF TRANSPORTATION HARBORS DIVISION				
JOB TITLE ASBESTOS CONTAINING DUST CLEANUP AND LIMITED VISUAL ASSESSMENT, PORT ALLEN HARBOR KAUAI, HAWAII				
SHEET TITLE SECTIONS				
DESIGNED BY: LY				DATE: FEB 2023
DRAWN BY: EL				SCALE: AS SHOWN
CHECKED BY: YZ	JOB NUMBER			5
	S70150			
				5 OF 5 SHTS.